



**ALL NEW**

# **ELECTRIC FLAT SCREEN PRINTER WITH BELT TAKE-OFF**



## **APPLICATION**

For screen-printing substrates in Thin Board form made of rigid materials.

Ex: Metal/Plastic Name Plates, Sign Boards, Printed Circuit Boards, Glass Boards, etc..

## FEATURES

**TOP-QUALITY:** Latest upgrade of the stylish ATMA type Two-post Belt Take-off machine with ISO9001 & 14001 certified quality featuring unique vertical screen up/down design, solid & light-weighted structure, compact size, fine finish, extreme accuracy, superb performance & versatility, user-friendly operations & functions, environment-friendly energy efficiency, less maintenance, a Top-quality choice of its price level in the market.

**TABLE SECTION:** Stationary Table consists of Vacuum Table(with 4 Take-off Belts slots) & bottom base, Vacuum Table is made of aluminum-alloy face boards + solid cast vacuum chamber, Vacuum provided by Ring-blower, with instant on/off switching + flow adjustment valve. Bottom base is cast-made and accommodates up/down movement of take-off belts.

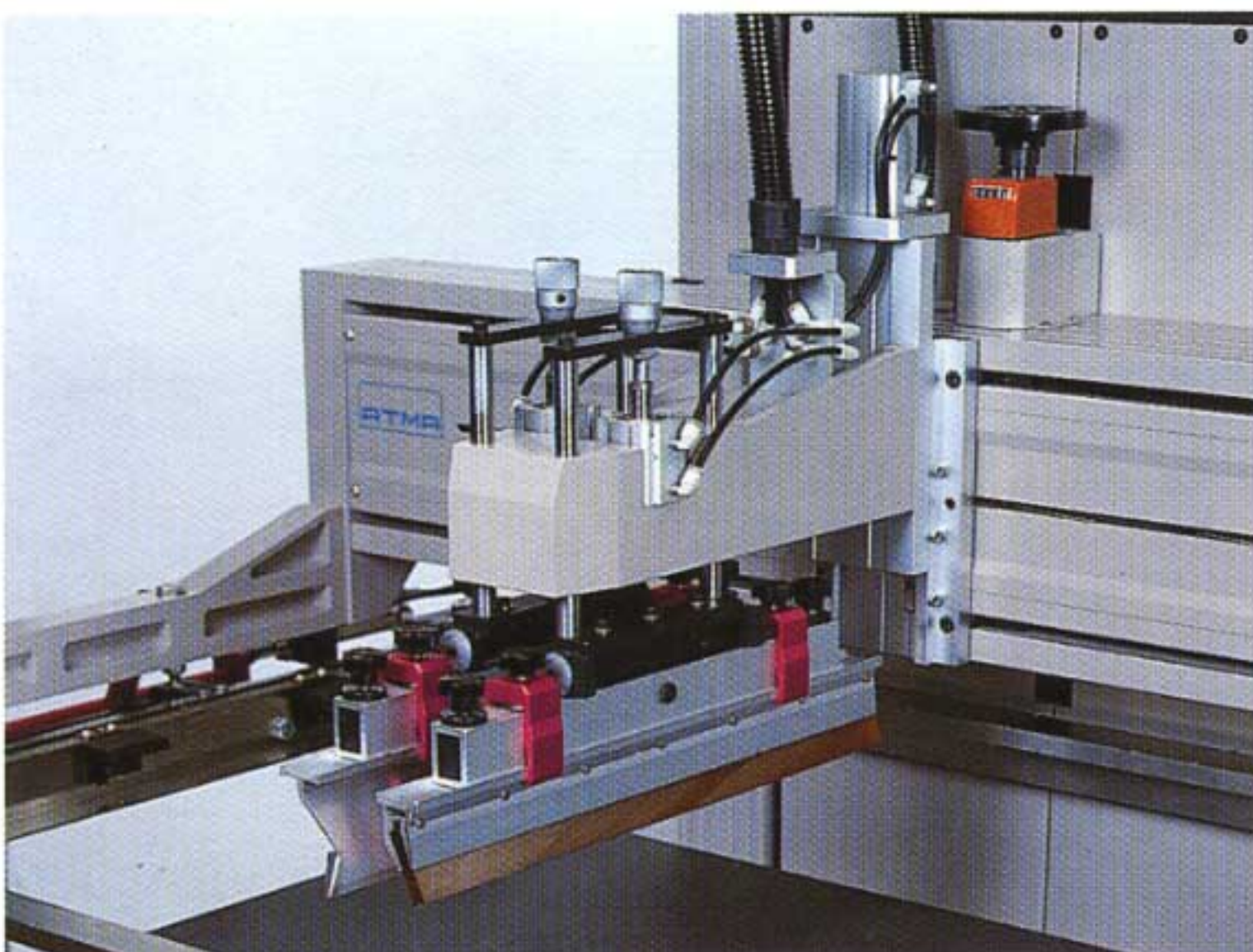
**SCREEN SECTION:** Screen inserted from front and held by left & right Screen Holder Arms which are freely re-locatable. With adjustment knobs + numerical micrometers for X/Y-axis fine registration. Frame locking is pneumatic driven and integrated with loose-proof valves & controls against power/air shutdown or operation error(further optional pneumatic locking + loose-proof valve system may be added for Screen Holder Arms or X/Y Registration). Screen up/down is driven by heavy-duty motor + shock-free speed control + strong & light-weighted 2-post structure + linear rails, off-contact is set by adjustment knob + numerical micrometer, fast, smooth & stable run with accurate stop-positioning. With Screen Peel-off system to avoid smear defect(gradual up along print stroke + instant down before flood), speed and stroke settable.

**PRINT HEAD:** Long-stroked right-to-left print direction, motor driven + shock-free variable speed control + strong & light-weighted structure + linear rails ,travel margins settable, stable & smooth run in all speeds. With all necessary adjustments for Squeegee/Flood Coater: inclination angle, skew angle, up/down speed/depth, leveling. With also pneumatic Print Head Lift-up for clearing the head off the screen.

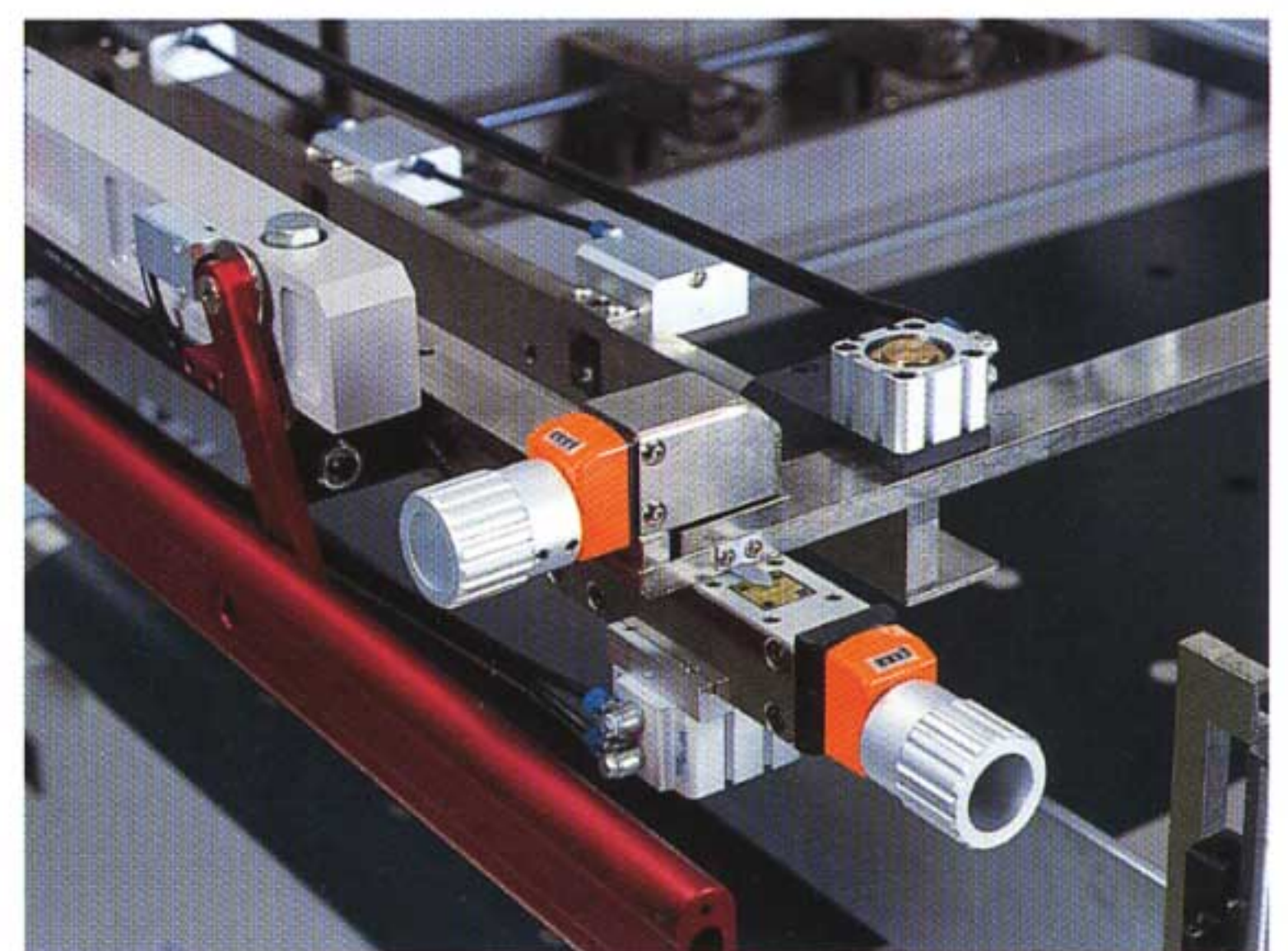


## ELECTRIC FLAT SCREEN PRINTER WITH BELT TAKE-OFF MODEL (MAX. PRINT AREA)

AT-80P/B (600x800mm)



Pneumatic Print Head Lift-up



Screen Registration Adjustments

**BELT TAKE-OFF:** The belts hide in the slots during printing and move up & run after printing to carry printed work out (toward conveyor or dryer or collecting desk, etc..), work with sensor detection in two selectable modes: keeps belts running till the printed work clears off, or stops the printed work on belt end for inspection. Belt speed variably adjustable and on/off selectable. Take-off direction leftward/rightward exchangeable.

**ELECTRIC CONTROL:** Adopts PLC control featuring all on/off switching for Power, System or else single-action controls & pneumatic frame locking, 3 modes selectable for each Operation/Vacuum/Cycle, Print/Flood & Take-off Belts Speed Tunings, Auto Timer/Foot Switch operation, Counter, Emergency-stop Switch Plate & Safety Bars. (Optional Pneumatic Locking for Frame Holder Arms or X/Y Registration is also on/off switch operated)

**PNEUMATIC CONTROL:** With Air Source on/off valve, auto moisture filtering/drainage & air-line lubrication, 1 each Pressure Adjustment Knob + Manometer for squeegee & flood coater.

**SAFETY:** With Safety Bars over left/front/right side against pinch between screen & table, Cycle Start/Interruption control on Foot Switch, Emergency-stop Switch Plate, Error-prevented program inter-link & light indication, Power Surge & Leak protections, etc., meets European safety requirements.

CHANGE MAY BE MADE WITHOUT PRIOR NOTICE

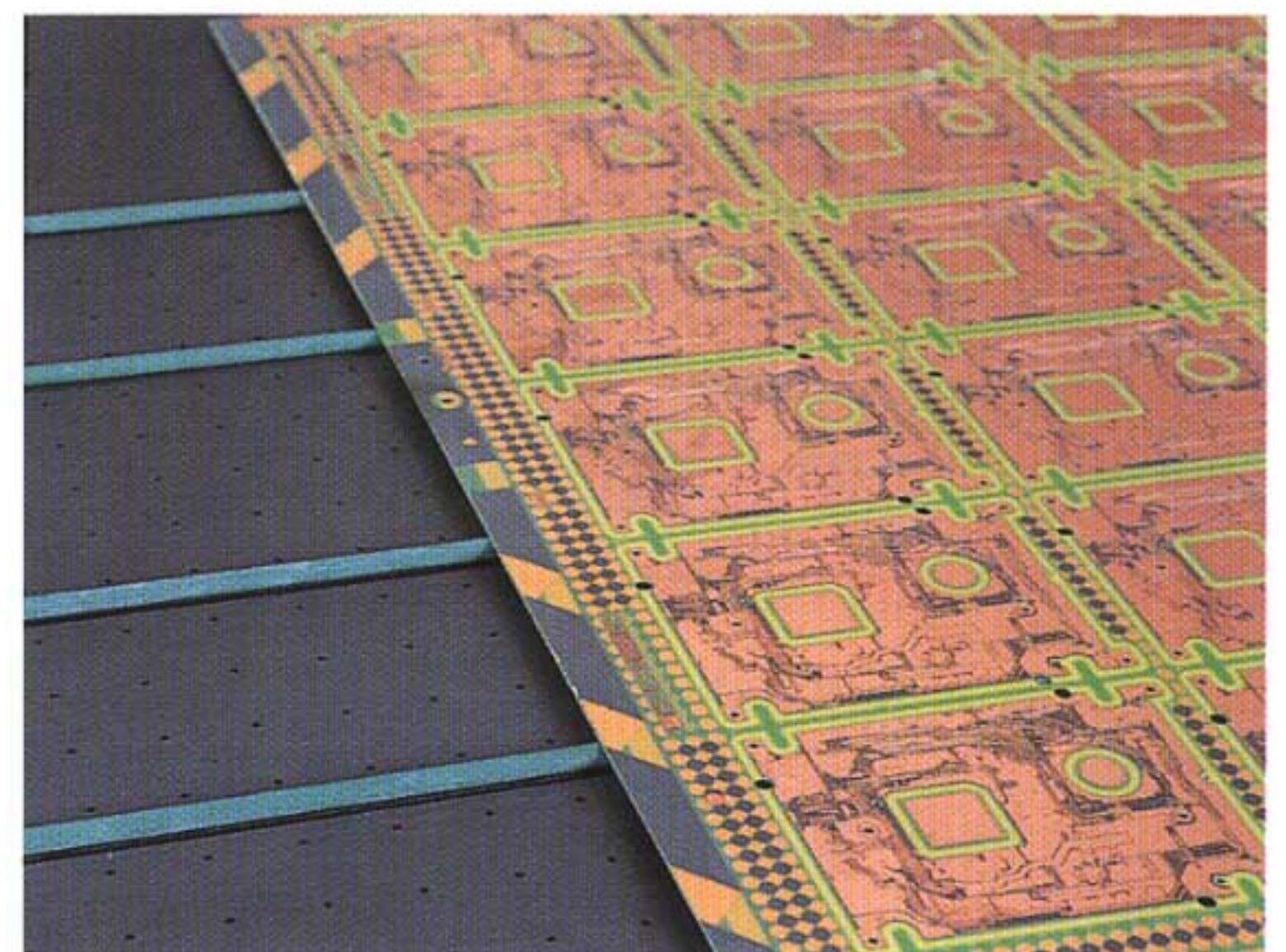


## ELECTRIC FLAT SCREEN PRINTER WITH BELT TAKE-OFF

**MODEL (MAX. PRINT AREA)**

AT-120P/B (700x1200mm)

AT-160P/B (700x1600mm)



Belt Take-off

## TECHNICAL DATA

SPECIFICATION	AT-80P/B	AT-120P/B	AT-160P/B
TABLE SIZE (DxW/mm)	700x900	800x1400	800x1700
VACUUM AREA (DxW/mm)	600x600	700x1220	700x1580
MAX. PRINT AREA (DxW/mm)	600x800	700x1200	700x1600
MAX. FRAME SIZE (O/D, DxW/mm)	900x1050	1000x1450	1000x1850
MAX. FRAME HEIGHT (mm)	25-54	25-54	25-54
SUBSTRATE THICKNESS (mm)	0-25	0-25	0-25
TABLE HEIGHT (mm)	980+20	980+20	980+20
SCREEN-UP CLEARANCE FROM TABLE (mm)	300+25	300+25	300+25
PRINT HEAD SPEED (mm/sec)	0-835	0-835	0-835
MAX. PRINT SPEED (P/H, full stroke)	660	540	400
SCREEN X/Y ADJUSTMENT (mm)	±10/ ±10	±10/ ±10	±10/ ±10
PRINT HEAD SKEW-ANGLE ( ° )	±9	±9	±9
POWER SOURCE	3-PHASE, 220V/380V, 50/60Hz		
POWER CONSUMPTION (kw)	2.5	3.5	4.0
COMPRESSED AIR SOURCE	5-6 kgs/cm <sup>2</sup>		
AIR CONSUMPTION (L/cycle)	3	3	3
MACHINE DIMENSION (WxDxH/cm)	180x130x170	245x140x175	290x140x175
MACHINE WEIGHT (kgs)	620	1020	1250



ISO 9001 ISO14001  
CERTIFIED



SYMBOL OF EXCELLENCE  
WINNER 93-02



SLIVER NATIONAL  
AWARD OF EXCELLWNC  
WINNER 96



NATIONAL INNOVATION  
RESEARCH AWARD  
WINNER 97



**ATMA CHAMP ENT. CORP.**

65, WUCHUEN 7TH ROAD, WUKU IND. ZONE, TAIPEI, TAIWAN 248

TEL : 886-2-2299-1293 E-MAIL : atma@atma.com.tw

FAX : 886-2-2299-1291 WEB : http://www.atma.com.tw



**INTERCHANGE**  
EQUIPMENT INC.

**Interchange Equipment Inc.**

90 Dayton Avenue, Passaic, NJ 07055

Tel 973.473.5005 Fax 973.473.4485

Sales 1.800.822.5457

www.interchangecorp.com

sales@interchangecorp.com